

Control Systems Newsletter

(Automation Equipment & Factory IT)

Issue Number 2003-07

GE Fanuc Automation Europe S.A.

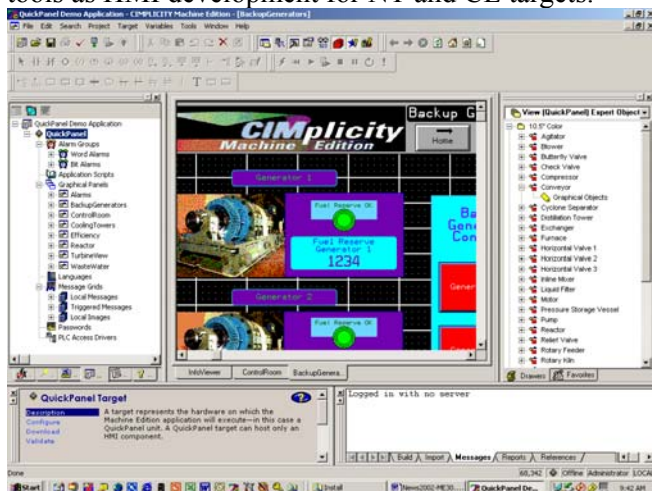
CIMPLICITY Machine Edition View for QuickPanel included with each 6" TFT, 7" TFT and 10" TFT 2000 series units

Summary

We are pleased to announce the free of charge delivery of one user license of CIMPLICITY Machine Edition View for QuickPanel. This license will be included automatically with all 6" TFT 2000 units (IC753QTS602), 7" TFT 2000 units (IC753QTS702) and 10" TFT 2000 units (IC753QTL002) starting July, 1st 2003 ending September, 30th 2003.

Machine Edition View for QuickPanel

View now supports HMI application development for QuickPanel targets, using most of the same or similar tools as HMI development for NT and CE targets.



QuickPanel applications in View support a wide range of hardware communication protocols.

Among the QuickPanel application development features are the following.

QuickPanel targets: Machine Edition Integration

QuickPanel application development uses standard Machine Edition and CIMPLICITY View tools and editors. Also, QuickPanel targets are organized just like Windows NT and CE targets.

- The **Panel Editor**, with both a "drawing grid" and a "tiling grid" (for aligning QuickPanel

graphical objects with the panel display's touch cell matrix).

- The **Toolchest**, for creating templates (or "fxClasses") of graphical object collections, scripts, alarm groups, message groups, and panels.
- The **Languages** grid for projects in multiple languages.

QuickPanel targets: Importing existing Quick-Designer™ applications

Experienced HMI developers may have existing QuickPanel projects created in QuickDesigner. You can import existing QuickDesigner projects into View, either from a QuickDesigner project file or (in some cases) directly from a QuickPanel unit.

Conversion of QuickPanel targets to QuickPanel View (CE) targets

You can now convert an application for a standard QuickPanel target into one for a QuickPanel View model of QuickPanel CE target.

QuickPanel targets: Simulation of QuickPanel HMIs on Windows NT computers

When developing a QuickPanel project on a Windows NT computer, you can now simulate the QuickPanel HMI on the local computer. This lets you view and test the HMI without having to connect and download the application to the QuickPanel hardware.

QuickPanel targets: GE Fanuc PLC target integration

If you're using Logic Developer - PLC™ to program GE Fanuc PLCs, you can use variables defined on certain models of PLC targets in your QuickPanel application directly. To use this feature, both the GE Fanuc PLC target and the QuickPanel target must be in the same application. You must also add and configure a PLC Access driver in the QuickPanel target to be used for communications between the two units.

QuickPanel targets: Basic scripting support

Scripts are short, user-defined executable programs composed of sequences of instructions. Scripts in QuickPanel targets can draw items on the QuickPanel display or monitor, control, and modify project data.

QuickPanel targets: Grid editors

The appearance of Local Message Display, Triggered Message Display, and Local Image Display graphical objects depends on the values of associated variables. In CIMPLICITY View, you can edit the list of conditions and associated appearance attributes (collectively known as "message groups") in intuitive, easy-to-use grid editors.

QuickPanel targets: Driver support

QuickPanel targets support a wide variety of PLC Access drivers, which let QuickPanel applications communicate with industrial PLCs.

- Allen-Bradley ControlLogix
- Allen-Bradley DH485
- Allen-Bradley DHPlus
- Allen-Bradley Remote I/O
- Allen-Bradley SLC500 DF1
- Allen-Bradley TCP/IP (QuickPanel 2000)
- GE Fanuc Genius
- GE Fanuc SNP/SNP-X
- GE Fanuc EGD
- GE Fanuc TCP/IP (QuickPanel 2000)
- Modbus
- Modbus TCP/IP (QuickPanel 2000)
- Profibus DP
- Uni-Telway

QuickPanel targets: Support for standard QuickPanel graphical objects

On QuickPanel targets, View supports the standard set of QuickPanel graphical objects listed below. Interactive graphical objects (such as Alarm Windows and Push Buttons) also have a 3D appearance for improved usability.

- | | |
|---------------------------|------------------------|
| • Alarm Window | • Analog Meter |
| • Arc Wedge | • ASCII Data Entry |
| • Bar Graph | • Image (bitmap) |
| • Circle/Ellipse | • Goto Button |
| • Illuminated Push Button | • Legend Plate |
| • Line | • Local Image Display |
| • Local Message Display | • Numeric Data Display |
| • Numeric Data Entry | • Pie Wedge |
| • Pilot Light | • Polygon |
| • Polyline | • Print Button |
| • Push Button | • Rectangle |
| • Round Rectangle | • Selector Switch |
| • Text | • Text Data Display |
| • Time/Date Display | • Trend Display |
| • Triggered Message | • Word Button |

Display

QuickPanel targets: Support for standard QuickPanel features

The following standard QuickPanel features are supported by CIMPLICITY View.

- **Password security:** Restrict access to specific panels to operators with a specified security level.
- **Optional attached keypad:** Configure actions for keystrokes on an attached keypad.
- **Alarms:** Configure bit alarms and word alarms with an intuitive spreadsheet-like editor.
- **Message groups:** Easily configure sets of variable values and associated messages or images for Local Message Displays, Local Image Displays, and Triggered Message Displays.
- **Compact Flash transfers:** Copy QuickPanel 4 application runtime files to Compact Flash (CF) cards for later transfer to a QuickPanel unit.

Ordering Information

Do not order the CIMPLICITY Machine Edition license separately: it will be automatically included.

Contacts

Please don't hesitate to contact us with any questions.

Mickaël Desloges
Product Leader HMI
Phone: +352 72 79 79 360
Fax: +352 72 79 79 351
E-mail: desloges@gefanuceur.ge.com