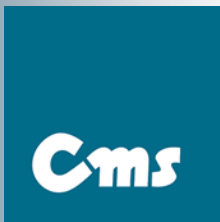


Changes in assortment

Authorized deliver of
PLCs from GE Fanuc
Automation S. A.

Authorized distributor
and sales partner of LU
Industrietechnik GmbH

Authorized distributor
and service for geared
drives Flender



March
2007

GE Fanuc Automation –2007, March



Introduction

Dears,

We have focused on software in this news and assortment changes oriented journal. GE Fanuc released the program for conversion data between Proficy and ERP (Enterprise Resource Planning) systems, e. g. SAP.

We suppose the software can be usefull for you and that is why we bring basic program information.

Company director
Ing.Věroslav Hájek

Requirement

Every company needs transfer production or business data between two different programs. Traditionally, integration of production data and business systems has been limited to manual processes, or at best, automated transactions that were narrowly defined. GE Fanuc addressed developing Proficy™ Enterprise Connector to facilitate data handling.

Basic characteristic

GE Fanuc announced the release of Proficy™ Enterprise Connector 1.5., which provides bi-directional enterprise integration between Proficy and Enterprise Resource Planning (ERP) system, such as SAP. The introduction of this real-time capability allows manufacturers to establish flexible production operations and remain competitive in the global economy. As an extension of GE Fanuc's Proficy Plant Applications integrated suite of Production Management Solutions, Enterprise Connector enables the mapping of the external Business Systems requests to/from the Proficy Information Architecture. The information from manufacturing facilities is now available to the business to make more rapid, informed, business decisions.

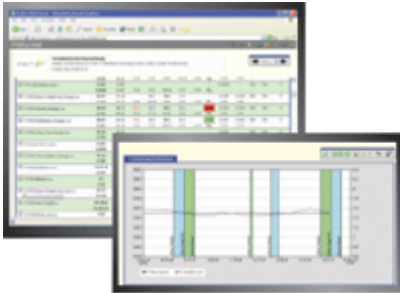


Technology

The Proficy Enterprise Connector leverages the ISA-95 standard to define the interface between an enterprise's business and manufacturing systems through the XML-based B2MML (Business to Manufacturing Markup Language) schema. It automatically generates B2MML schemas and message types for immediate use in an orchestrations and/or mapping.

Changes in assortment – 2007, March

It exchanges messages from all of the various, connected business applications with Proficy, enabling ERP visibility into Production Management real-time data for material consumption, performance reporting, schedule execution and other supply chain and/or enterprise-level functions.



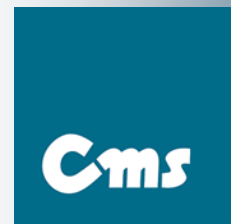
Program tools

Proficy Enterprise Connector is supplied, out-of-the-box, with a number of B2MML-based templates to jumpstart the integration process and speed a user's Time-To-Value. The B2MML-based templates can be tailored to meet the specific needs of a customer, site or implementations of an ERP system.

Advantages

In manufacturing, there is no such thing as One-Size-Fits-All. It is necessary to be able to support the unique requirements of an industry, a customer and a specific site while providing as much stable, reusable technology as possible.

GE Fanuc proved many times they are able to do it. They supported Continuous, Batch, Hybrid and Discrete production environments of Plant Applications products with the same solution set. This great experience was utilized in the course of programming Enterprise Connector. Now every customer can repeat integration and support it in the global scale.



CMS s.r.o.
Nádražní 296
293 01 Mladá Boleslav
tel: +420 326 700 610
fax: +420 326 700 613
cmsys@cmsys.cz
www.cmsys.cz